

FZ FORZA®

INNOVATED IN DENMARK 



COLLECTION
2017/2018

WELCOME TO A NEW SEASON AND THE 2017/18 COLLECTION

With more than 25 years of experience and dedication to the proud Danish design tradition, we have developed a collection stronger than ever. FZ FORZA is at the forefront, when it comes to badminton clothing and equipment, and our new collection is no exception.

The 2017/18 collection offers a new innovative racket series, fresh colours, unique designs, exclusive details and much more.

Our racket range has been expanded with the new Precision series designed for players who focus on precision and control.


Precision 10.000 is made with a new innovative power frame, where the top of the frame is a bit broader giving the racket extra power. As successfully introduced with Titanium 11.000 and Power 988, Precision 10.000 is available in different models with various flex points, offering a perfect match regardless of the badminton player's skill level. This means that any player will be able to enjoy the benefits of playing with a premium racket and still have full control over their game.

This year's clothing line is designed with an eye for detail and with qualities ensuring comfort and durability. By combining new fresh colors and prints with a traditional cut our Danish design team have created a range of clothing perfectly balanced between new trends on the one hand and the classic badminton look on the other.

We are proud to finally show you our newest collection and encourage you to flick to the next page and explore with us.

We hope you will enjoy the FZ FORZA 2017/18 collection and look forward to an exciting season.

Kind regards



Martin Lundgaard
CEO

- 2 Intro
- 4 Our models

Sportswear

- 6 Clothing Technology
- 8 Club Series 2017 / 2019 - Infusion
- 14 Club Series 2017 / 2019 - Light my fire
- 18 Dynamic - Men
- 22 Dynamic - Women
- 26 Basic
- 28 Shorts, Skirts & Pants
- 30 Club Series 2016 / 2018 - Stay Focused
- 32 Club Series 2016 / 2018 - Go Fight
- 34 Off the court

Shoes

- 36 Shoe Technology
- 38 Shoes
- 46 Socks

Rackets

- 48 Know your racket
- 50 Racket Technology
- 54 FZ Precision Series
- 58 FZ Power Series
- 66 FZ Light Series
- 70 FZ Graphite Series
- 72 FZ Classic Series
- 74 FZ Power Trainer
- 76 Shuttles
- 78 How to string a racket
- 79 Strings

Equipment

- 80 Grip
- 82 Bags
- 88 Accessories

OUR MODELS

An important asset in FZ FORZA is our players, presenting what we call Team FORZA. No other would present our newest collection better than the talented players representing FZ FORZA every single day.

We are more than proud to be able to present a small glimpse of Team FORZA here in our catalogue. Showing you this year's collection are two excellent English players, two amazing Swedish players and four talented Danish badminton players - all with promising results in their luggage. Get ready to be inspired while a part of Team FORZA guide you through our new collection.

ANDERS ANTONSEN

Club: Aarhus Badminton Club
Born: 27th of April, 1997
Best world ranking: 24

Best results:

- Winner of Belgian International
- Winner of Spanish Open
- Winner of Swedish Masters
- Winner of Austria Open
- Winner of Scottish Open 2016
- Quarter finals Denmark Open 2016

BEN LANE

Club: National Badminton Center UK
Born: 13th of July, 1997
Best world ranking: 43

Best results:

- Winner of Spanish International
- Winner of U17 European Championship (Mix and MD)
- Silver MD U19 European Championship
- Winner of Hungary International

JESSICA PUGH

Club: Uni of Notts
Born: 17th of March, 1997
Best world ranking: 43

Best results:

- European Junior Champion
- Winner of Spanish International
- Winner of Romania Open
- Winner of Iceland Open

LINE KJÆRSFELDT

Club: Team Skælskør-Slagelse
Born: 20th of April, 1994
Best world ranking: 23

Best results:

- 2 x National Champion, DK (2015+2016)
- Winner of Scottish Open 2015
- Winner of European Games 2015
- Attending the Olympics 2016



EMMA WENGBERG

Club: Täby Badminton Club
and Vendsyssel

Born: 28th of November, 1987

Best world ranking: 32

Best results:

- 8 x National Champion WD, Sweden
- Winner of Finnish Open 2015
- Winner of Polish International 2015
- Quarter finals US Open 2016
- Quarter finals Bitburger Open 2016



CLARA NISTAD

Club: Täby Badminton Club
and Vendsyssel

Born: 2nd of February, 1992

Best world ranking: 32

Best results:

- Winner of Finnish Open 2015
- Winner of Polish International 2015
- Runner up Irish Open
- Runner up Prague FZ FORZA International
- Quarter finals US Open 2016
- Quarter finals Bitburger Open 2016



MATHIAS CHRISTIANSEN

Club: Greve Strand Badminton

Born: 20th of February, 1994

Best world ranking: 22

Best results:

- Winner of Thomas Cup 2016
- Bronze at the European Championship
- Winner of Scottish Open 2014 + 2016
- Winner of Sweddisch Masters



DAVID DAUGAARD

Club: Greve

Born: 27th of December, 1994

Best world ranking: 22

Best results:

- Winner of Belgian International
- Winner of Scottish Open 2014+2016
- Winner of Finish Open
- Semi final Swiss Grand prix gold

BADMINTON CLOTHING

The FZ FORZA clothing collection is based on the proud Danish design and quality tradition ensuring both a stylish look and a comfortable as well as durable quality. With professional research and development our fabric qualities are carefully picked out by our Danish design team and afterwards tested by our top badminton players around the world.

When designing the collection all the different movements from the badminton sport is considered, footwork, jump, swing ect. ensuring a comfortable fit in every design. Comfortable clothing is essential when performing your maximum on court and we will make sure that you both feel and look world class when smashing the shuttle.

FABRIC FUNCTIONS



ANTI SHRINK

All garments have been preshrunk to avoid size changing. Follow the care label and your FZ FORZA clothes should be your favorite badminton clothing for years.



ANTISTATIC

When moving around you create static electricity, but our fabrics prevent the garments from sticking to your body. To avoid your garments from being static, please do not tumble dry.



STRETCHABLE

Most fabric is stretchable either by knitting or due to added elasthane. We make sure that the style has just the right stretch in order for the style to both fit the body and give comfort.



ANTI-PILLING

Our garments are made in fabrics either constructed to avoid anti-pilling or fabrics that are given an anti-pilling treatment. Even after washing several times, the surface will still look good.

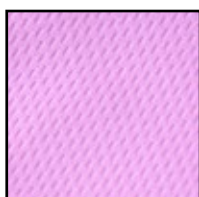
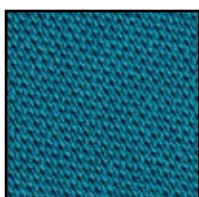


DRYFORZE

DryForze keeps you comfortable during the game! With the unique DryForze treatment, we ensure maximum comfort. DryForze makes the fabric perspiration transporting, quick drying and super pleasant to wear, and the DryForze capabilities will stay with your clothes for much longer than similar technologies. Fabric treated with DryForze has high breathability and a cool wearing comfort.

FABRIC

Although different weave fabrics have the same function, there are a slight difference in the appearance; touch and comfort. In order to meet different needs in our designs, various qualities are used in the FZ FORZA collection, and we always adopt new fabrics every season.



FZ FORZA DETAILS



NECK TAPE

We use neck tape to guarantee that you won't feel the seems when playing. A small thing that makes a big difference.

NECK PRINT

FZ FORZA clothing comes with printed neck labels to ensure extra comfort. No more itching and scratching - focus on playing instead.



FZIPPER-STOPPER

Fzipper-stopper stops the zipper from nipping into your skin while allowing you a full range of motions.

FZIPPER-PLACKET

Fzipper-placket is an inner placket behind the zipper protecting you from the zipper scratching you or getting caught.



CUSTOMIZED BUTTONS

Buttons in high quality with FZ FORZA on the side. The customized buttons give an exclusive look to the style.



CLIP PULLER

All our items with zippers are designed with clip puller zipper so that you are not bothered by the zipper during play.



INNERBRIEF

You will find innerbrief in some of our shorts and skirts, designed to wick sweat and keep you covered.



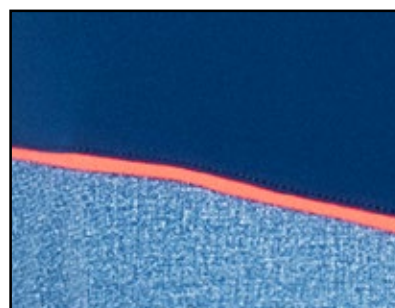
REFLECTIVE STRIPE

The reflective stripe detail is not only added because it looks good but also because it gives protections in the dark.



CUSTOM ROLL UP

Lix and Lixton pants are designed with easy roll up for extra custom fit. The length of the pants can be regulated with a full 4 centimetres.



PIPING

For certain styles we are using piping which add an exclusive look to the style.



ELASTIC FABRIC

Convenient cuffs with elastic fabric are easy to wear.



LOGO TECHNOLOGY

We use different technologies for our logos depending on the design: solid silica gel, 3D rubber print, heat transfer, screen print etc.

INFUSION

Get an infusion of energy on the badminton court with this new club series. Featuring energetic blue, new prints and exciting new material combinations, this club series from FZ FORZA will allow you to both look and feel on the top of your game.

Jessica Pugh

Ben Lane



01103 MALIBU BLUE



M: 302334 Jr: 302435

PORTLAND POLO

100% Polyester

Interlock w. DryForze

- Men's sizes: XS-3XL

- Junior sizes: 8-14 years

CLUB
2017/2019



01103 MALIBU BLUE



W: 302335

PENNY POLO

100% Polyester

Interlock w. DryForze

- Women's sizes: XS-2XL

CLUB
2017/2019

LADIES)(FIT





0103 MALIBU BLUE

M: 302338

PALERMO TEE

93% Polyester, 7% Elasthane
Cationic melange w. DryForze
- Men's sizes: 2XS-3XL



David Daugaard



96 BLACK



M: 302283 Jr: 302284

CLYDE JACKET

92% Polyester, 8% Elasthane
Brushed fabric inside

- Men's sizes: XS-3XL
- Junior sizes: 8-14 years



96 BLACK



W: 302285

CONCORD JACKET

92% Polyester, 8% Elasthane
Brushed fabric inside

- Women's sizes: XS-2XL



LADIES)(FIT



Mathias Christiansen

12



Anders Antonsen



0103 MALIBU BLUE

M: 302332 Jr: 302423

PONTIAC TEE

100% Polyester

Bird eye mesh w. DryForze

- Men's sizes: XS-3XL

- Junior sizes: 8-14 years



0103 MALIBU BLUE

W: 302333

PHOEBE TEE

100% Polyester

Bird eye mesh w. DryForze

- Women's sizes: XS-2XL



LADIES)(FIT



96 BLACK

M: 302277 Jr: 302278

CARDIFF POLO

100% Polyester

Interlock w. DryForze

- Men's sizes: XS-3XL

- Junior sizes: 8-14 years



96 BLACK

W: 302279

COVENTRY POLO

100% Polyester

Interlock w. DryForze

- Women's sizes: XS-2XL



LADIES)(FIT



LIGHT MY FIRE

Prepare to light up the badminton court with styles from our new Light My Fire club series. By mixing the playful fiery coral with more calm colors, such as blue, black and white, we have created an exclusive sporty look.

Anders Antonsen





M: 302295 Jr: 302296

DUNDEE POLO

88% Polyester, 12% Elastane
Interlock w. DryForze
- Men's sizes: XS-3XL
- Junior sizes: 8-14 years



W: 302297

DHAKA POLO

88% Polyester, 12% Elastane
Interlock w. DryForze
- Women's sizes: XS-2XL



LADIES (FIT)



M: 302326 Jr: 302328

PLAYER JACKET

Sleeves and back: 92% Polyester,
8% Elastane
Lining: 100% bird eye polyester
- Men's sizes: XS-3XL
- Junior sizes: 8-14 years



W: 302327

PAISLEY JACKET

Sleeves and back: 92% Polyester,
8% Elastane
Lining: 100% bird eye polyester
- Women's sizes: XS-2XL



LADIES (FIT)





96 BLACK

M: 302301 Jr: 302302

DUBAI TEE

100% Polyester

Interlock w. DryForze

- Men's sizes: XS-3XL

- Junior sizes: 8-14 years

CLUB
2017/2019



96 BLACK

W: 302303

DENVER TEE

100% Polyester

Interlock w. DryForze

- Women's sizes: XS-2XL

CLUB
2017/2019

LADIES)(FIT



0099 WHITE

M: 302298 Jr: 302299

DUBLIN POLO

100% Polyester

Interlock w. DryForze

- Men's sizes: XS-3XL

- Junior sizes: 8-14 years

CLUB
2017/2019



0099 WHITE

W: 302300

DUDLEY POLO

100% Polyester

Interlock w. DryForze

- Women's sizes: XS-2XL

CLUB
2017/2019

LADIES)(FIT



04151 FIERY CORAL

W: 302339

PANAMA TEE

93% Polyester, 7% Elasthane

Cationic melange w. DryForze

- Women's sizes: 2XS-2XL

LADIES)(FIT





M: 302334

PORTLAND POLO

100% Polyester
Interlock w. DryForze
- Men's sizes: 2XS-3XL



W: 302335

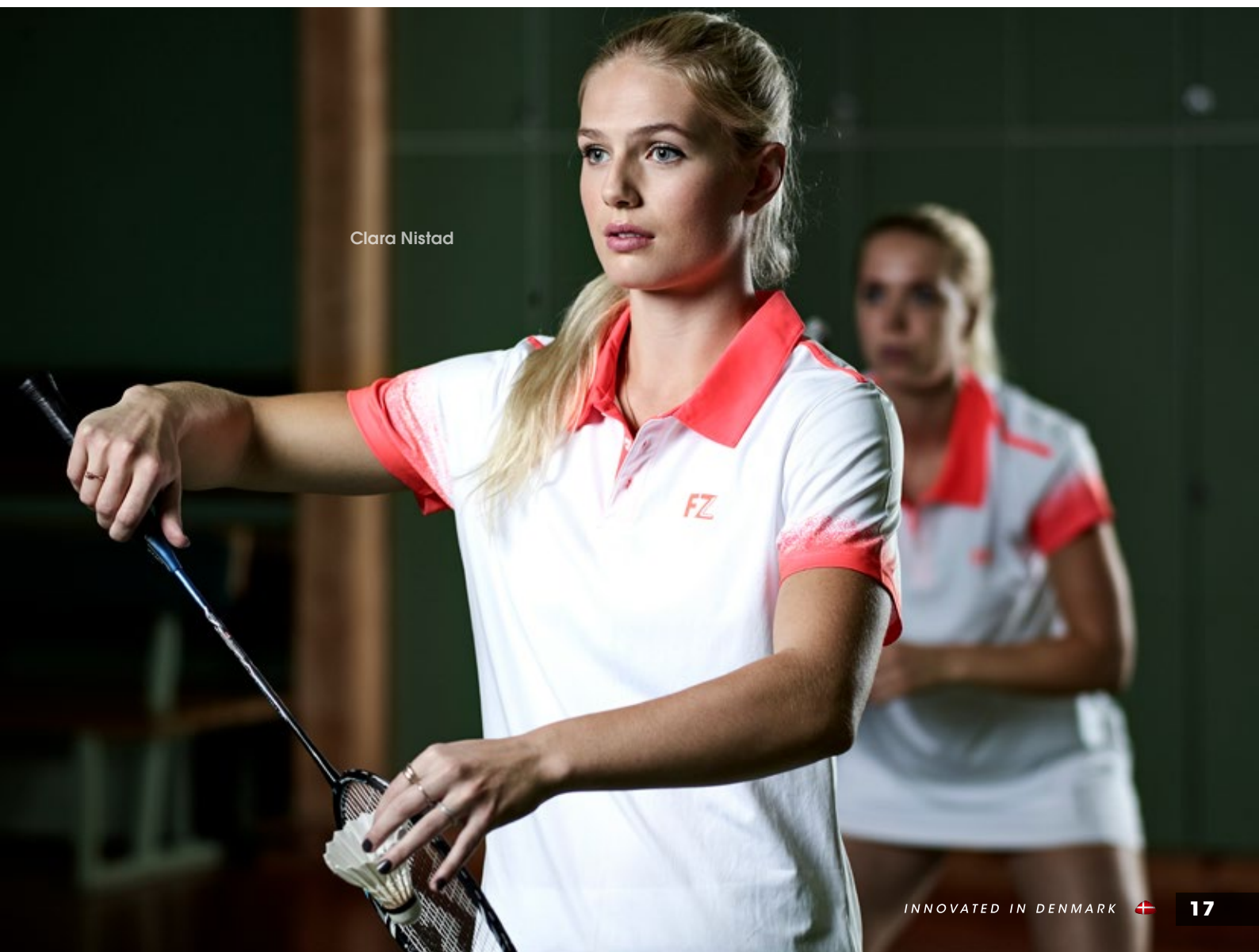
PENNY POLO

100% Polyester
Interlock w. DryForze
- Women's sizes: 2XS-2XL

LADIES)(FIT



Clara Nistad



DYNAMIC

MEN

A dynamic and exclusive men series featuring a new mix of materials and a sporty green color. A exclusive warm-up jacket both comfortable and stylish and sporty green polos perfect for the confident male badminton player.

Mathias Christiansen





02144 GREEN GECKO

M: 302283

CLYDE JACKET

92% Polyester, 8% Elasthane

Brushed fabric inside

- Men's sizes: 2XS-3XL



02144 GREEN GECKO

M: 302338

PALERMO TEE

93% Polyester, 7% Elasthane

Cationic melange w. DryForze

- Men's sizes: 2XS-3XL



Mathias Christiansen





David Daugaard



02144 GREEN GECKO



M: 302274

CHICAGO POLO

100% Polyester
Interlock w. DryForze
- Men's sizes: 2XS-3XL



02144 GREEN GECKO



M: 302298

DUBLIN POLO

100% Polyester
Interlock w. DryForze
- Men's sizes: 2XS-3XL



5% BLACK




UNISEX: 301869

MITE SWEATSHIRT

65% Polyester, 35% Cotton
Brushed fabric inside
- Sizes: 2XS-3XL





Line Kjøersfeldt

DYNAMIC

WOMEN

Stay true to your style with the Dynamic women series. A dynamic and exclusive clothing series featuring a new mix of materials and a sporty purple color. A purple padded warm-up jacket both comfortable and stylish and complementary polos suitable for the stylish women's badminton player.



0419 VIOLET

W: 302327

PAISLEY JACKET

Sleeves and back: 92% Polyester, 8% Elasthane
Lining 100% bird eye polyester
- Women's sizes: 2XS-2XL

LADIES)(FIT



04101 PURPLE WINE

W: 302339

PANAMA TEE

93% Polyester, 7% Elasthane
Cationic melange w. DryForze
- Women's sizes: 2XS-2XL

LADIES)(FIT





0419 VIOLET



W: 302276

CAMBRIDGE POLO

100% Polyester

Interlock w. DryForze

- Women's sizes: 2XS-2XL

LADIES)(FIT



0419 VIOLET



W: 302333

PHOEBE TEE

100% Polyester

Bird eye mesh w. DryForze

- Women's sizes: 2XS-2XL

LADIES)(FIT



96 BLACK



W: 302341

PEARL SKIRT

84% Polyester, 16% Elastane

- Women's sizes: 2XS-2XL

LADIES)(FIT





Line Kjaersfeldt



02144 GREEN GECKO

W: 302051

TILEY TEE

100% Polyester
Interlock w. DryForze
- Women's sizes: 2XS-2XL

LADIES) (FIT



90 BLACK

W: 3013 G: 8582

ZARI SKIRT

90% Polyester, 10% Elasthane
Interlock w. DryForze
- Women's sizes: XS-2XL
- Girl's sizes: 6-14 years

LADIES) (FIT



Jessica Pugh

Ben Lane



02144 GREEN GECKO

M: 302050

TILL TEE

100% Polyester
Interlock w. DryForze
- Men's sizes: 2XS-3XL



96 BLACK

M: 301404 Jr: 301405

AJAX SHORTS

86% Polyester, 14% Elastane
Interlock w. DryForze
- Men's sizes: XS-3XL
- Junior sizes: 6-14 years



SHORTS, SKIRTS & PANTS

Mix and match all clothing series with our cool shorts, skirts and pants. FZ FORZA shorts, skirts and pants are must-haves on the badminton court securing players ease of movement and a comfortable fit with every single style.



0008 BLACK

0099 WHITE

W: 8583 G: 8582

LADIES)(FIT

ZARI SKIRT

90% Polyester, 10% Elasthane

- Women's sizes: XS-2XL

- Girl's sizes: 6-14 years



0008 BLACK

0099 WHITE

M: 301404 Jr: 301405

AJAX SHORTS

86% Polyester, 14% Elasthane

- Men's sizes: XS-3XL

- Junior sizes: 6-14 years





M: 302418

LANDERS SHORTS

100% Polyester
- Men's sizes: 2XS-3XL



W: 301964A

RIETI SKIRT

LADIES)(FIT

90% Polyester, 10% Elasthane
Lower piece 80% Nylon, 20% Spandex
- Women's sizes: 2XS-2XL



W: 301967A

LADIES)(FIT

GUBBIO SHORTS

90% Polyester, 10% Elasthane
- Women's sizes: 2XS-2XL



W: 301612 G: 301733

LADIES)(FIT

LANA SHORTS

84% Polyester, 16% Elasthane
- Women's sizes: XS-2XL
- Girl's sizes: 8-14 years



W: 302341

PEARL SKIRT

LADIES)(FIT

84% Polyester ,16% Elasthane
- Women's sizes: 2XS-2XL



M: 302324 Jr: 302325

PERRY PANTS

90% Polyester, 10% Elasthane
- Men's sizes: XS-3XL
- Junior sizes: 8-14 years

CLUB
2017/2019



W: 302323

PLYMOUNT PANTS

90% Polyester, 10% Elasthane
- Women's sizes: XS-2XL

CLUB
2017/2019 LADIES)(FIT



M: 301643 Jr: 301727

LIXTON PANTS

100% Polyester, Micro fiber
- Men's sizes: XS-3XL
- Junior sizes: 6-14 years

CLUB
2016/2018



W: 301644

LIXT PANTS

100% Polyester, Micro fiber
- Women's sizes: XS-2XL

CLUB
2016/2018 LADIES)(FIT



STAY FOCUSED

Stay Focused with our new and yet traditional STAY FOCUSED club series. The dominant colors, red, white and black, brings a traditional touch to the series, while new gold details, prints, piping details and our rubber printed FZ logo adds an exclusive look. The print on Gage and Gail is inspired by the badminton net, bringing a unique badminton expression to the styles. Light-weight materials and quick dry in yarn ensures a soft and comfortable feeling.



01142 ELECTRIC BLUE

M: 302071 Jr: 302072

GAGE POLO

100% Polyester
Interlock w. DryForze
- Men's sizes: XS-3XL
- Junior sizes: 8-14 years

CLUB
2016/2018



01142 ELECTRIC BLUE

W: 302071

GAIL POLO

100% Polyester
Interlock w. DryForze
- Women's sizes: XS-2XL

CLUB
2016/2018

LADIES)(FIT





96BLACK

M: 302079 Jr: 302080

GLEN TEE

100% Polyester
Interlock w. DryForze
- Men's sizes: XS-3XL
- Junior sizes: 8-14 years

CLUB
2016/2018



0099 WHITE

M: 302079 Jr: 302080

GLEN TEE

100% Polyester
Interlock w. DryForze
- Men's sizes: XS-3XL
- Junior sizes: 8-14 years

CLUB
2016/2018



01142 ELECTRIC BLUE

M: 302167 Jr: 302169

GABA TEE

100% Polyester
Interlock w. DryForze
- Men's sizes: XS-3XL
- Junior sizes: 8-14 years

CLUB
2016/2018



96 BLACK

W: 302078

GONE TEE

100% Polyester
Interlock w. DryForze
- Women's sizes: XS-2XL

CLUB
2016/2018



LADIES)(FIT



96 BLACK

W: 302078

GONE TEE

100% Polyester
Interlock w. DryForze
- Women's sizes: XS-2XL

CLUB
2016/2018



LADIES)(FIT



01142 ELECTRIC BLUE

W: 302169

GILLIAN TEE

100% Polyester
Interlock w. DryForze
- Women's sizes: XS-2XL

CLUB
2016/2018



LADIES)(FIT



01115 SURF THE WEB

M: 302082 Jr: 302083

GROVER PULLI

90% Polyamid, 10% Elasthane
Yarndyed isoli
- Men's sizes: XS-3XL
- Junior sizes: 8-14 years

CLUB
2016/2018



01115 SURF THE WEB

W: 302081

GADEN PULLI

90% Polyamid, 10% Elasthane
Yarndyed isoli
- Women's sizes: XS-2XL

CLUB
2016/2018



LADIES)(FIT



GO FIGHT

GO FIGHT in styles from this amazing printed club series. The series is dominated by exclusive details and prints developed with inspiration from shuttles and badminton nets. Red, white and gold brings a new expression to the exclusive series.



0455 CHINESE RED

M: 302056 Jr: 302057

SAIL TEE

100% Polyester
Interlock w. DryForze
- Men's sizes: XS-3XL
- Junior sizes: 8-14 years

CLUB
2016/2018



96 BLACK

M: 302059 Jr: 302060

SACO POLO

100% Polyester
Interlock w. DryForze
- Men's sizes: XS-3XL
- Junior sizes: 8-14 years

CLUB
2016/2018



0099 WHITE

M: 302079 Jr: 302080

GLEN TEE

100% Polyester
Interlock w. DryForze
- Men's sizes: XS-3XL
- Junior sizes: 8-14 years

CLUB
2016/2018



0455 CHINESE RED

W: 302055

SATARA TEE

100% Polyester
Interlock w. DryForze
- Women's sizes: XS-2XL

CLUB
2016/2018



LADIES)(FIT



96 BLACK

W: 302058

SUMMER POLO

100% Polyester
Interlock w. DryForze
- Women's sizes: XS-2XL

CLUB
2016/2018



LADIES)(FIT



0099 WHITE

W: 302078

GONE TEE

100% Polyester
Interlock w. DryForze
- Women's sizes: XS-2XL

CLUB
2016/2018



LADIES)(FIT



96 BLACK

M: 302122 Jr: 302191

SHAON JACKET

100% Polyester
Micro fiber
- Men's sizes: XS-3XL
- Junior sizes: 8-14 years

CLUB
2016/2018



96 BLACK

W: 302121

SHARON JACKET

100% Polyester
Micro fiber
- Women's sizes: XS-2XL

CLUB
2016/2018



LADIES)(FIT



FZ FORZA

OFF THE COURT

The 2017/18 collection is completed with this Off The Court series. This series is comfortable, simple and indispensable for training off the court.



96 BLACK

M: 302217

HUGH TEE

100% Polyester
- Men's sizes: 2XS-5XL



96 BLACK

M: 302214

HARRY JACKET

100% Polyester
Micro fiber
- Men's sizes: 2XS-5XL



96 BLACK

W: 302218

JEN JACKET

100% Polyester
Micro fiber
- Women's sizes: 2XS-5XL



96 BLACK

W: 302221

JUMP TEE

100% Polyester
- Women's sizes: 2XS-5XL



96 BLACK

M: 302215

HOLD TRACK PANTS

100% Polyester
Micro fiber
- Men's sizes: 2XS-5XL

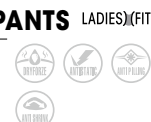


96 BLACK

W: 302219

JILLIAN TRACK PANTS

100% Polyester
Micro fiber
- Women's sizes: 2XS-5XL



96 BLACK

W: 302222

JILLA LONG SLEEVED TEE

100% Polyester
- Women's sizes: 2XS-5XL



96 BLACK

M: 302216

HUST LONG TIGHTS

89% Polyester, 11% Elastane
- Men's sizes: 2XS-5XL



96 BLACK

W: 302220

JAMINE LONG TIGHTS

89% Polyester, 11% Elastane
- Women's sizes: 2XS-5XL

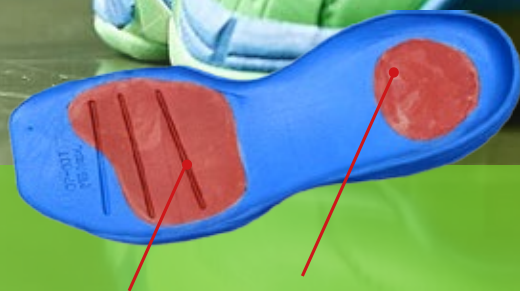


FZ FORZA SHOES

With the right badminton shoes, you can prevent injuries and perform better on court. Put simply, badminton shoes have to be comfortable, improve your game and prevent injuries. These three factors are the basics in all FZ FORZA shoes.

A lot of people focus on the racket when buying badminton equipment, but shoes, and the right shoes, are at least as important as the racket. A pair of good shoes are essential to perform. Badminton is an extremely fast-paced game that requires a lot of movement in different directions. You move back and forth, from side to side and jump. The game requires quick changes in pace and direction, making quick footwork essential in badminton. Any slip hurts your performance or even worse, your body!

The FZ FORZA shoes are made in materials quality checked in rigorous test to make sure that it is suitable and stable. Before the shoes enter the market they are furthermore tested by professional badminton players and if necessary, improvements are made before you find it on the shelves.



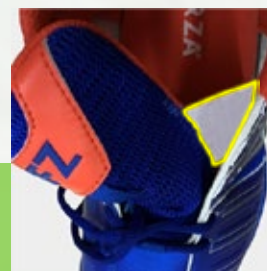
FZORB

FZorb is a fantastic material for shock absorption. This is an extra soft landing pad, that we mould into the sole. FZorb helps to absorb the many hard shocks that players' feet are subjected to during play.



FZ MAS-SOLE

A EVA insole with extra stabilization and extra ankle support with a pattern that makes it extra comfortable when wearing.



SNUG-FIT

The tongue is held in place by an elastic band so it will never go out of place. The tongue is furthermore made in mesh fabric that allows the feet to breathe, for a much more comfortable wear.

X-TECHNOLOGY

Be using this evolutionary X-Technology at the back end of the shoe players get a more stable shoe with less risk of injuries. One of the most common badminton injuries is a twist in the ankle, but the FZ FORZA X-Technology prevent just that by stabilizing the ankle.

FZ HEEL CONTROL

Our custom-fitted heels are specially designed for each shoe model. This ensures that the heel doesn't bother you while playing. By inserting a special moulded PVC piece we make sure that the heel is stable for the lifetime of the shoe without ever going soft.

ASE- ARCH SUPPORT ENHANCEMENT

By inserting this light weight TPU piece mid foot under the arch of the foot, we achieve both a lighter and stronger shoe but also a more stable shoe. ASE helps prevent pronation and torsion in the shoe for increased functionality.

FZ RUBBER GRIP

Extremely durable rubber out-soles constructed for better grip with the playing surface. We only use high grade rubber to make sure you have superior grip and traction.

LATERAL STABILITY TECHNOLOGY

Our lateral stability technology provides extra support when playing and moving quickly around on court.

FZ CURVE

FZ curve means that the medial side of the outsole is slightly rounded. Badminton is different from most other sports as you sometimes drag your feet to reach the shuttle. We make sure that the medial (inside) of the shoe is not a sharp edge, to make sure that you don't fall or twist while playing.

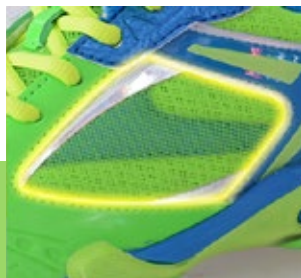
NON-MARKING

Our outsoles are tested and treated to make sure they are all non-marking.



DURA-U

Our high-tech micro fibre PU is used where your badminton shoes are worn the most. Dura-U offers extreme durability due to its unique abrasion resistance.



DRYLEX

A special mesh layer on the shoe which allows the feet to breathe during play. The fabric is made to help with transporting the perspiration away from your feet, to keep them dry and moving.



DURA-COAT


A thin coating used to treat our regular PU to make them more durable and for a softer wear.



CARBON TUCK BOARD

Our Carbon Tuck Board made of three-dimensional carbon fiber sheet provide mid-sole stability, decreasing torsional strain on the foot's arch.

FZ FORZA®

INNOVATED IN DENMARK 

REENERGIIZED V3 TO BE BETTER



Like **a bolt of lightning lit up the sky** FZ FORZA brings Lingus V3 back to court. With a new super stylish look and additional stability, protection and durability Lingus V3 offers you effortless movement match after match.



302420
LINGUS V3

Like a bolt of lightning lit up the sky FZ FORZA brings Lingus V3 back to court. With a new super stylish look and additional stability, protection and durability Lingus V3 offers you effortless movement match after match.
- Sizes: 36-48



302394
SPEEDESTER M

New technical FZ FORZA top shoe securing comfort and stability. The extra EVA damping gives you optimized support. Speedester has a strong PVC heel counter inside and lateral stability technology giving you solid support and stability. The Carbon Tuck Board provides mid-sole stability, decreasing the torsional strain on the foot's arch.
- Sizes: 36-48



0455 CHINESE RED

302438

SPEEDESTER W

New technical FZ FORZA top shoe securing comfort and stability. The extra EVA damping gives you optimized support. Speedester has a strong PVC heel counter inside and lateral stability technology giving you solid support and stability. The Carbon Tuck Board provides mid-sole stability, decreasing the torsional strain on the foot's arch.

- Sizes: 36-48





302414

FIERCE M

The brand new and stylish FZ FORZA shoe will hug your feet and give all-around protection from heel to forefoot. Using breathable mesh, it is both light and comfortable, while the FZorb technology delivers instant cushion when jumping. To provide arch support and anti-twist Fierce has a Carbon Tuck Board and TPU shank on midsole.

- Sizes: 36-48



302415

FIERCE W

The brand new and stylish FZ FORZA shoe will hug your feet and give all-around protection from heel to forefoot. Using breathable mesh, it is both light and comfortable, while the FZorb technology delivers instant cushion when jumping. To provide arch support and anti-twist Fierce has a Carbon Tuck Board and TPU shank on midsole.

- Sizes: 36-43





0115 SURF THE WEB

301677

LEANDER M

Arch support and reinforced sides makes this shoe very stable and comfortable. The shoe is extremely durable thanks to the use of high quality micro fiber PU, which means prolonged life for this very good-looking shoe. The inside of the shoe has Dura-grip for increased grip at the net. A shoe suitable for anyone, who wants a competitive shoe at a reasonable price.

- Sizes: 36-49



0099 WHITE

301677

LEANDER M

Arch support and reinforced sides makes this shoe very stable and comfortable. The shoe is extremely durable thanks to the use of high quality micro fiber PU, which means prolonged life for this very good-looking shoe. The inside of the shoe has Dura-grip for increased grip at the net. A shoe suitable for anyone, who wants a competitive shoe at a reasonable price.

- Sizes: 28-49



04101 PURPLE WINE

301942

LEANDER W

Arch support and reinforced sides makes this shoe very stable and comfortable. The shoe is extremely durable thanks to the use of high quality micro fiber PU, which means prolonged life for this very good-looking shoe. The inside of the shoe has Dura-grip for increased grip at the net. A shoe suitable for anyone, who wants a competitive shoe at a reasonable price.

- Sizes: 36-49



Clara Nistad

Emma Wengberg



302131

NEW RESULT

A very good shoe at an extremely competitive price. This shoe will get you results without hurting your wallet. The shoe has heel support and a ESS reinforced shank for increased stability. The upper is mainly built in mesh to ensure comfort and breathability during play. A functional quality shoe that will perform.

- Sizes: 36-47



301998

FZ SPEED

This shoe has heel support and a ESS reinforced shank for increased stability. The upper part is mainly built in mesh to ensure comfort and breathability during play.

- Sizes: 36-47



FZ FORZA

SOCKS

Keep your feet stylishly comfortable with our badminton socks for both men and woman. The perfect outfit and the perfect shoes require perfect accessories. The FZ FORZA socks offer breathability, comfort and fit on the court, securing freedom to feel perfectly comfortable in every single match.



Unisex: 2741

FZ CLASSIC SOCK

3 Pack

- Sizes: 35-38/39-42/43-47



Unisex: 2741

FZ CLASSIC SOCK

3 Pack

- Sizes: 35-38/39-42/43-47



Unisex: 302441

COMFORT SOCK LONG

80% Cotton, 17% Nylon, 3% Spandex

1 Pair

- Sizes: 35-38/39-42/43-47



Unisex: 302442

COMFORT SOCK SHORT

80% Cotton, 17% Nylon, 3% Spandex

1 Pair

- Sizes: 35-38/39-42/43-47



Unisex: 302451

COMFORT SOCK LONG

80% Cotton, 17% Nylon, 3% Spandex

3 Pack: white, fiery coral and green

- Sizes: 35-38/39-42/43-47



Unisex: 302452

COMFORT SOCK SHORT

80% Cotton, 17% Nylon, 3% Spandex

3 Pack: white, fiery coral and green

- Sizes: 35-38/39-42/43-47

KNOW YOUR RACKET

A racket can be divided into 3 separate parts which each contribute to the racket's qualities.

The shaft

The shaft determines the racket's qualities, and so the choice of shaft is very important in terms of getting the most benefit from your racket. Players with a good technique have good rotation in their lower arm which transfers into a force at impact. If you rotate in your lower arm it is very easy for you to hit a shuttlecock to the baseline and you do not need further help from the racket. Players with a good technique would normally benefit from a rigid shaft, and players with less rotation would benefit from a flexible shaft. A flexible shaft gives a flick which adds speed to the shuttlecock, but it takes a bit longer for the shaft to settle which is okay if it is a slow-paced game. A rigid shaft is stable and doesn't torque and gives better control of your stroke. This is especially helpful in fast-paced games.

The frame

The structure of the frame or racket head is important in relation to the force that has to be transferred to the shuttlecock from the rotation in the wrist and arm and the flexibility in the racket shaft. The less torsion in the frame – the more force will be transferred and the more control you have of your hit. The weight of the frame is also important for how the racket feels when hitting. A head-light racket has the weight distributed in the shaft and grip. It requires that your technique is good and that you have rotation and impact force. You will feel that your racket is very easy to move. A head-heavy racket primarily has its weight in the frame. It is best suited for a person that relies more on fitness, power and endurance than technique. You may feel that your racket is a bit slow to move, but it gives you extra power when hitting. A racket with an even balance has the weight distributed evenly between head and shaft. You will feel more power when hitting, but the racket is a bit slower to move.

The weight

The weight is obviously also important to how your rackets perform. The force and power you generate is directly correlated with the weight of the racket. The heavier racket, the more force and power you will generate. Most normal weighted rackets are around 85-86 grams at the most heavy. Another part involved in generating force is acceleration. This means that you can also generate force if you can manage to accelerate the racket faster. A lighter racket helps with this. FZ FORZA has been on the forefront of the development in lighter rackets and have for years managed to make rackets all the way from 75grams and up. Normally the lighter rackets are preferred by either less physical players, or players that focus more on speed and handling.

FZ FORZA RACKETS

The racket technology has changed a lot the past 25 years, and the advanced technology has contributed to more speed and power in badminton. This also means that we as racket manufacturer have to make even better rackets and always improve our racket technology. It would not be possible to use the old wooden rackets in today's speed and power game. The trend has moved towards lighter rackets bringing the required speed into the game. On the other hand it is important to maintain a certain weight in the frame to produce the power which is also very much needed on court.

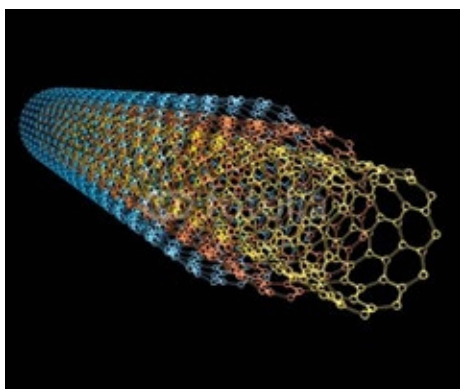
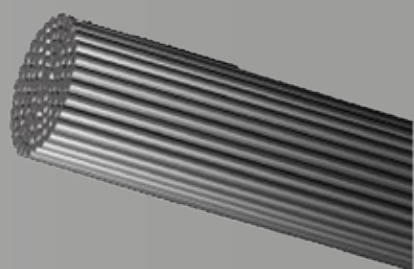
FZ FORZA is at the forefront when it comes to badminton racket technology, and this year's racket collection is no exception.

MATERIAL



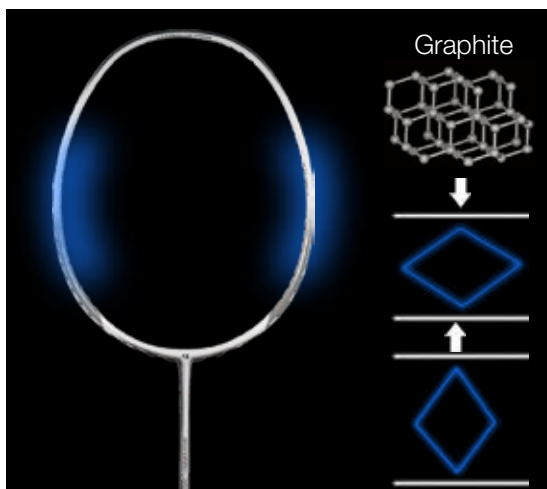
CARBON # WEAVE

Our carbon fibre technology uses the # shape interweaving to closely weave the layers of carbon fibre, forming a strong powerful network of tense carbon graphite. This adds torsion stability to the racket frame and shaft for increased precision and durability.



CARBON NANO TUBES (CNT)

As we continue to improve our rackets and strive towards creating the best racket in the world, we continually research and develop new materials and ideas to take our rackets to the next level. Carbon Nano Tubes (CNT) is based on extraordinary small scale advancements in the material construction. Thanks to our cooperation with Aalborg University in Denmark, FZ FORZA is able to introduce world-class rackets manufactured using polymer composite materials modified by Multi-Wall Carbon Nano Tubes (MWCNT). Thanks to the MWCNT technology your FZ FORZA racket has improved durability in comparison with conventional rackets. The polymer resin that binds the carbon fibers together will ensure toughness and damage tolerance.



SPONGE TECHNOLOGY

FZ FORZA's sponge technology is a way of aligning the molecules inside the resin, binding the graphite together at a Nano-level, creating small spaces of 5-20 nanometre (1/1,000,000,000m) inside the solid graphite. This acts as small airbags/springs inside your racket, creating a much softer feel while playing and absorbing the shock of the shuttle impact. This innovative technology will relieve your wrist, elbow and shoulder, so you can hit the shuttle at your maximum power always without absorbing the effects of the impacts as your racket does this for you. As the sponge technology reacts as a spring, your racket will also transfer more power at impact.

ULTRA HIGH MODULUS GRAPHITE (HM)

This material is used to enhance the performance in our very best rackets. The ultra high modulus graphite is stronger and stiffer than ordinary graphite, creating rackets that have less torsion and more power. This will give you more accurate and powerful strokes.



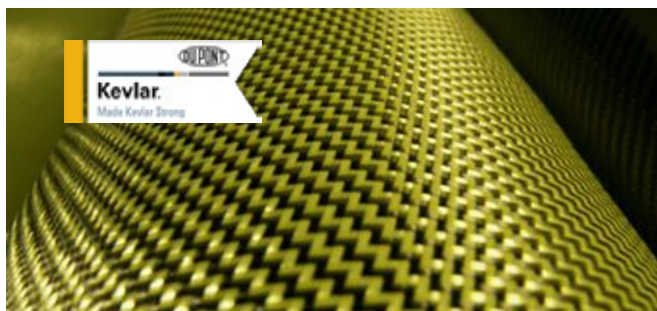
FADC, ANTI DRAG COATING

Before sending our rackets to the market we finish them off with a special high molecular, low density powder coating ensuring that the surface of each racket is as smooth as possible, thus reducing air resistance and drag.

SHAFT TECHNOLOGY

KEVLAR® REINFORCED

Kevlar® is a very advanced material which combines great strength with light weight. The material is elastic and yet 5 times stronger than steel. Therefore Kevlar® has a lot of uses and is used for bulletproof vests among other things. When FZ FORZA uses Kevlar® in combination with graphite in the rackets we can make light and extremely strong rackets with a lot of power. Kevlar® helps absorb the shock at impact, making the racket feel soft and comfortable which lets you generate more power.



ANTI-TORQUE SHAFT

Most players want the least amount of torque in the shaft as possible. That's why, when we apply more than 25 years of badminton knowledge into the weaving process and combinations of the different angles, we fold our graphite layers so we end up with shafts that have up to 9% less torque than comparable shafts from competitors. This hugely affects your game as you are gaining precision without sacrificing power, flexibility and control.



Slim shaft

Conventional shaft

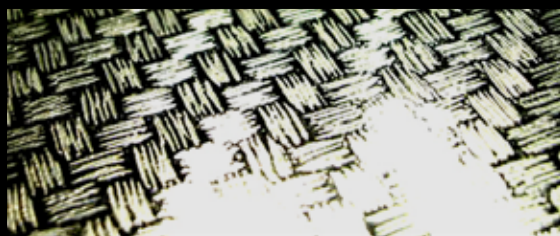


SLIM SHAFT

The slim shaft greatly reduces the air resistance when swinging and it greatly increases your swing speed but with less effort. The FZ FORZA slim shaft rebounds almost as fast as a conventional shaft, meaning that you get much more stability and accuracy, making it a superior choice when you are looking for a slim shaft rackets.

TITANIUM REINFORCED

Titanium is a very light and rigid material which is used to build space shuttles among other things. The combination of graphite and titanium increases the racket's durability and gives the racket increased control.



SUPER SLIM SHAFT

With an outer diameter of only 6,0 this is the thinnest shaft in the world of FZ FORZA, with an aerodynamic shaft for super fast action. Combining the super slim shaft with HM carbon fibre in the build, we end up with a super thin shaft, that still has amazing playability and feel. This shaft is for players who enjoy playing with increased speed and need fast reactions.

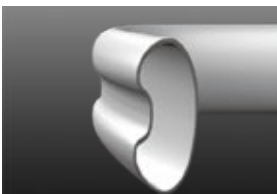


FRAME TECHNOLOGY



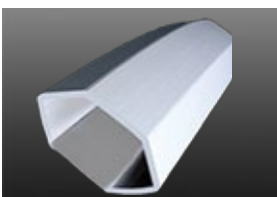
826 FRAME

Combining the benefits of the hexa and octagon shape, this innovative shape gives you both increased strength in the racket, while being thinner on top. Decreased air-resistance combined with less torque makes this a precise, fast and durable weapon on court.



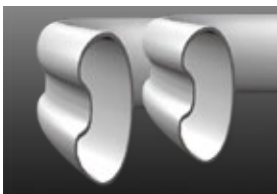
SLIM FRAME

The slim frame is 12-18% thinner than conventional rackets. We achieve this by combining superior high grade materials and resins with our proprietary production methods to achieve a slimmer racket frame that moves faster through the air, without sacrificing power or torsion.



HEXAGON FRAME

FZ FORZA has developed a hexagon frame which is more narrow and stronger than usual. It gives reduced air resistance and less torsion. That means faster reactions, better control and more power.



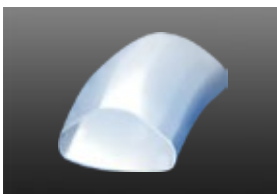
WIDE BODY FRAME

FZ FORZA's wide body frame is an extra wide frame construction that makes the frame more rigid and stable - synonymous with greater control and greatly enhanced power. The wider body enables players to string the racket harder thus adding to the overall power transfer when hitting the badminton shuttle.



LAST - Low Aerodynamic drag system technology.

By applying micro-thin sheets of a special hybrid-composite material on the inside of the frame, we have managed to create a smoother inner surface, which in return means less air resistance and increased swing.



RAZOR FRAME

With a rounded edge on the outer frame the air flows smoothly around the rackets, resulting in less drag and more power.



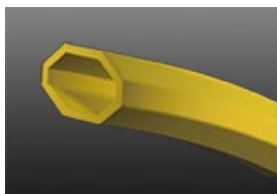
SUPER SLIM FRAME

Expanding on our existing knowledge of creating playable and stable superior slim frames, we have taken the technology one step further. During test in wind tunnels there is 14% less drag compared to conventional frames and 6% less than our slim frames, meaning that you will get your racket to the shuttle faster, allowing you to react faster.



AIR FLOW FRAME

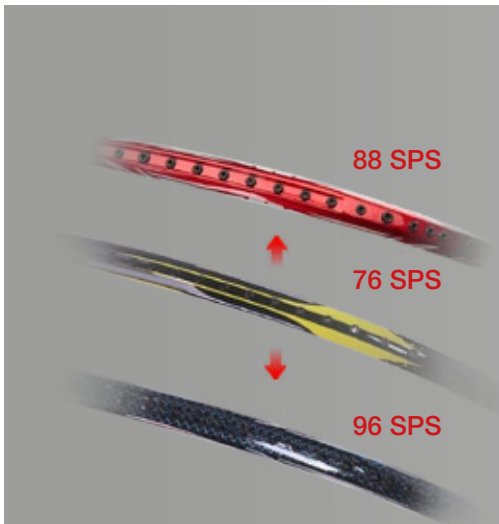
Our newly developed frame reduces drag and air resistance during your stroke, enabling you to deliver more power and precision. Furthermore the more rigid T-joint construction offers a much more stable frame with almost no torsion, allowing you to put the shuttle exactly where you want it.



OCTAGON FRAME

FZ FORZA has developed a octagon frame which ensures that the air flows around the frame with greater ease, thus increasing your reaction time. The frame is also more narrow and stronger than usual reducing air resistance and providing torsion. The frame design is extra durable, making you play stronger for longer.

FRAME TECHNOLOGY

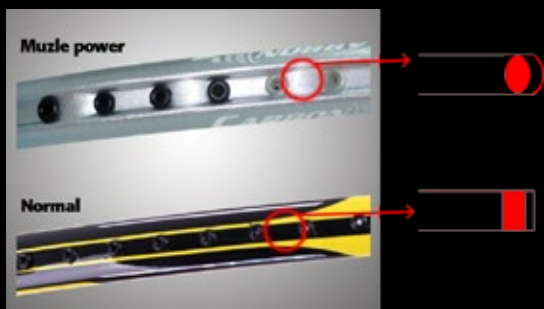


88 SPS (String power system)

FZ FORZA's revolutionary SPS is a part of all our new top-of-the-range models. The SPS is favoured by many top players and players looking for a high tension feel. The SPS provides a unique shuttle contact, and tests show a striking force up to 18 percent more powerful even when missing the Sweet Spot. The secret to its success is the fact that you get more string/power behind each contact with the shuttle, increasing the effect you have on where you want to put it next. The SPS improves string durability noticeably. As it feels like adding 5-6 lbs. to your string tension, you put much less stress on the strings thereby prolonging the lifespan of your strings. Besides extra power and improved shuttle contact, a FZ FORZA SPS racket will also save players a lot of money.

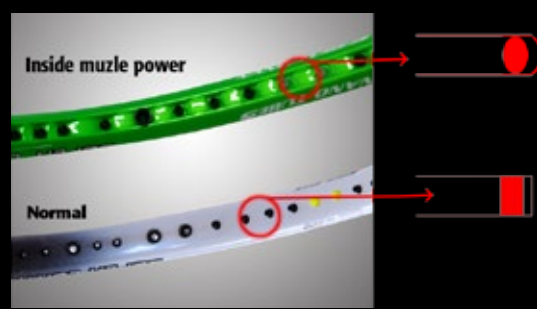
96 SPS (String power system)

FZ FORZA's revolutionary SPS - to the max capability of the racket. This requires a top level player to handle, as this is the F-1 of badminton. The ultimate in power and control, but with an slightly increased risk of damaging the racket.



MUZZLE POWER

Muzzle Power locates the string on rounded archways that eliminate stress-load and fatigue through contact friction. This construction creates total unity of the string and frame through closer and tighter contact.



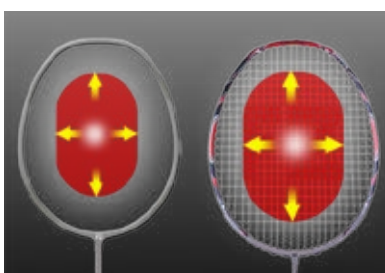
INSIDE MUZZLE POWER

When applying inside muzzle power to our rackets, it creates a more durable frame. The torsion is less for more accurate shots, and the frame will stay firm for longer, making sure that you get enjoyment out of your racket for longer.



8U

When we released our ground breaking 6U racket, we were the first to offer a playable below 75 gram racket in 100% graphite. With several technologies in both shaft, frame and production, combined with use of the best materials, we are now taking it one step further and introducing Light 8U with a weight of only 68 gram. It does not come any lighter than that. A fantastic fast and easy to play racket. A racket that gives you the swing speed you have always been dreaming about.



OVER SIZE

The slightly oversized frame helps increase the sweet spot, for easier shot-making and increased fun while playing. The racket is still light and the special shape of the oversize head means that you will still be able to generate lots of power. The future of over size rackets has started here.

PRECISION

This range of rackets are designed for players focusing on precision, accuracy and control. For players who like to dominate the rallies with precise strokes that makes each shot a tough job for the opponent to return.





302360

FZ FORZA PRECISION 10.000 VS

Holes	88
Weight	87g
Balance	290 mm (M)
Flexibility	Very stiff (5)
Shaft	40T CNT U-HM graphite
Frame	40 T - Titanium Reinforced CNT U-HM
Power	10
Player	All round

A racket that is the perfect choice if you want a combination between power and accuracy. Aerodynamic for swing power and balance point of 290 combined with a titanium reinforced frame gives you extreme accuracy. Very stiff racket. The choice for very technical, skillfull players, that looks for a perfect balance between power and control.



302359

FZ FORZA PRECISION 10.000 S

Holes	88
Weight	87g
Balance	290 mm (M)
Flexibility	Stiff (4)
Shaft	40T CNT U-HM graphite
Frame	40 T - Titanium Reinforced CNT U-HM
Power	10
Player	All round

A racket that is the perfect choice for a combination between power and accuracy. Aerodynamic for swing power and balance point of 290 combined with a titanium reinforced frame gives you extreme accuracy. Stiff racket. The choice for technical, skillfull players, that looks for a perfect balance between power and control.



302358
**FZ FORZA
PRECISION 10.000 M**

Holes	88
Weight	87g
Balance	290 mm (M)
Flexibility	Medium (3)
Shaft	40T CNT U-HM graphite
Frame	40 T - Titanium Reinforced CNT U-HM
Power	10
Player	All round

A racket that is the perfect choice for a combination between power and accuracy. Aerodynamic for swing power and balance point of 290 combined with a titanium reinforced frame gives you extreme accuracy. Medium stiff shaft. The choice for all players, that looks for a perfect balance between power and control.



302362
**FZ FORZA
PRECISION 9600**

Holes	96
Weight	86g
Balance	290 mm (M)
Flexibility	Stiff (4)
Shaft	40 T U-HM CNT Graphite
Frame	40 T U-HM CNT Graphite
Power	9
Player	All round

Our innovative and recognized 96 hole string system. With 96 holes you will have superior control. Additionally the 96 hole string system adds durability to your strings.



302365
**FZ FORZA
PRECISION 7000**

Holes	88
Weight	85g
Balance	295 mm (HH)
Flexibility	Medium (3)
Shaft	30 T - CNT U-HM Graphite
Frame	30 T - CNT U-HM Graphite w. 4 pcs Ti
Power	8
Player	All round

Racket with a very good mix of control and power. Titanium inserts on the frame and Titanium reinforced shaft for increased accuracy and a head heavy balance for increased power. Suitable for all players.



302366
**FZ FORZA
PRECISION 5000**

Holes	88
Weight	87g
Balance	290 mm (M)
Flexibility	Medium (3)
Shaft	24 T - CNT U-HM Graphite
Frame	24 T - CNT U-HM Graphite
Power	7
Player	All round

With a medium shaft this racket helps create power while the perfect balance helps create accuracy and control. A perfect choice for the players looking for a quality racket with a supreme balance of power, feel and increased accuracy.



302369
**FZ FORZA
PRECISION 1000**

Holes	76
Weight	86g
Balance	290 mm (M)
Flexibility	Flexible (2)
Shaft	24 T - CNT U-HM Graphite
Frame	24 T - CNT U-HM Graphite
Power	6
Player	All round

This hexagon frame racket with a perfect balance will help you control the game. Combined with a flexible shaft this racket will help ordinary and leisure player create extra power that will be noticed on court. This is the racket that will help improve the game of all the people that are not elite/ tournament level.



302427
**FZ FORZA
PRECISION 1000 JR**

Holes	76
Weight	86g
Balance	290 mm (M)
Flexibility	Flexible (2)
Shaft	24 T - CNT U-HM Graphite
Frame	24 T - CNT U-HM Graphite
Power	6
Player	All round

100% graphite kids racket. Too many years the only affordable choice have been heavy aluminium rackets. We now offer all the benefits of a graphite racket, weight, handling, superior feel to the future of badminton at very affordable price. If you want the best for your kids, this is the only way to go.

POWER

RACKETS FOR THE ATTACKING PLAYER

Introducing a line of rackets designed to give you more POWER! A line of rackets for the attacking player that wants more power in the shots, and finish the rallies fast.

11

Anders Antonsen





302356

FZ FORZA POWER 999

Holes	88
Weight	88g
Balance	300 mm (HH)
Flexibility	Stiff (4)
Shaft	40 T - Reinforced CNT U-HM
Frame	40 T - Titanium Reinforced CNT U-HM
Power	10
Player	Offensive

A new developed frame that focusses on power. Aerodynamic for great swing speed, balance point 300 and a little wider in the top of the frame with extra power for you makes this racket the perfect choice for the attacking player that like to finish the rally with a great power smash.



302000

FZ FORZA POWER 996

Holes	96
Weight	86g
Balance	290 mm (M)
Flexibility	Stiff (4)
Shaft	40T - Kevlar® reinforced CNT U-HM
Frame	40 T - Titanium Reinforced CNT U-HM
Power	10
Player	All round

With this racket we are re-launching our innovative and recognised 96 hole string system. The 96 hole string system offers the best in control, while the titanium reinforced head, makes sure you have superior accuracy and the Kevlar® shaft gives you power. This racket offers the best in control and power, and is designed for elite and tournament players only.



302001

FZ FORZA POWER 988 VS

Holes	88
Weight	87g
Balance	295 mm (HH)
Flexibility	Very Stiff (5)
Shaft	40 T - CNT U-HM
Frame	40 T - CNT U-HM w. 4pcs Ti.
Power	10
Player	Offensive

These rackets are head heavy and have a Kevlar® reinforced shaft for maximum power, while the titanium reinforced frame makes sure your shots stay within the lines. Pick the shaft that fits your style of play, and prepare to dominate with power on the badminton courts.



302186

FZ FORZA POWER 988 S COLOR UP

Holes	88
Weight	87g
Balance	295 mm (HH)
Flexibility	Stiff (4)
Shaft	40 T - CNT U-HM
Frame	40 T - CNT U-HM w. 4pcs Ti.
Power	10
Player	Offensive

A nice looking color update on the successful FZ FORZA Power 988 S. Aerodynamic frame for more power and speed. Head heavy for more powerful smashes. The stiff shaft and extremely strong frame makes it a perfect racket for the attacking player.



302002

FZ FORZA POWER 988 S

Holes	88
Weight	87g
Balance	295 mm (HH)
Flexibility	Stiff (4)
Shaft	40 T - CNT U-HM
Frame	40 T - CNT U-HM w. 4pcs Ti.
Power	10
Player	Offensive

Aerodynamic frame for more power and speed. Head heavy for more powerful smashes. The stiff shaft and extremely strong frame makes it a perfect racket for the attacking player.



302187
**FZ FORZA
 POWER 988 M COLOR UP**

Holes	88
Weight	87g
Balance	295 mm (HH)
Flexibility	Medium (3)
Shaft	40 T - CNT U-HM
Frame	40 T - CNT U-HM w. 4pcs Ti.
Power	9
Player	Offensive

A nice looking color update on the successful FZ FORZA Power 988 M. Aerodynamic frame for more power and speed. Head heavy for more powerful smashes. Medium stiff shaft for players that want the same benefits as our tournament players but in a less aggressive version. Racket that fits everybody that want high performance and like to attack on court.



302003
**FZ FORZA
 POWER 988**

Holes	88
Weight	87g
Balance	295 mm (HH)
Flexibility	Medium (3)
Shaft	40 T - CNT U-HM
Frame	40 T - CNT U-HM w. 4pcs Ti.
Power	9
Player	Offensive

Aerodynamic frame for more power and speed. Head heavy for more powerful smashes. Medium stiff shaft for players that want the same benefits as our tournament players but in a less aggressive version. Racket that fits everybody that want high performance and like to attack on court.



302004
**FZ FORZA
 POWER 988 F**

Holes	88
Weight	87g
Balance	295 mm (HH)
Flexibility	Flexible (2)
Shaft	40 T - CNT U-HM
Frame	40 T - CNT U-HM w. 4pcs Ti.
Power	9
Player	Offensive

Aerodynamic frame for more power and speed. Head heavy for more powerful smashes. Flexible shaft for players that want the same benefits as our tournament players but in a more helpful version. Racket that fits everybody that want high performance and a racket that helps generate more power.



302005

FZ FORZA POWER 888 S

Holes	88
Weight	86g
Balance	295 mm (HH)
Flexibility	Stiff (4)
Shaft	30 T - CNT U-HM
Frame	30 T U-HM CNT w. 4pcs Ti.
Power	7
Player	Offensive

You want power? We got you covered. With a range of rackets with Kevlar® shaft and titanium head, these rackets are for the leisure players that wants a head heavy racket with technology that works. The 88 holes string system provides extra feel and control while the frame is reinforced with titanium for extra accuracy and durability.



302006

FZ FORZA POWER 888 M

Holes	88
Weight	86g
Balance	295 mm (HH)
Flexibility	Medium (3)
Shaft	30 T - CNT U-HM
Frame	30 T U-HM CNT w. 4pcs Ti.
Power	8
Player	Offensive

You want power? We got you covered. With a range of rackets with Kevlar® shaft and titanium head, these rackets are for the leisure players that wants a head heavy racket with technology that works. The 88 holes string system provides extra feel and control while the frame is reinforced with titanium for extra accuracy and durability.



302007

FZ FORZA POWER 888 F

Holes	88
Weight	86g
Balance	295 mm (HH)
Flexibility	Flexible (3)
Shaft	30 T - CNT U-HM
Frame	30 T U-HM CNT w. 4pcs Ti.
Power	9
Player	Offensive

You want power? We got you covered. With a range of rackets with Kevlar® shaft and titanium head, these rackets are for the leisure players that wants a head heavy racket with technology that works. The 88 holes string system provides extra feel and control while the frame is reinforced with titanium for extra accuracy and durability.



302008

**FZ FORZA
POWER 588 S**

Holes	88
Weight	86g
Balance	290 mm (M)
Flexibility	Stiff (4)
Shaft	30T CNT U-HM
Frame	30T CNT U-HM w. 4pcs Ti.
Power	7
Player	Offensive

If you want power but feel more comfortable with a evenly balanced racket, this should be your new preferred racket of choiche. Kevlar ® reinforced shaft for added power and a titanium frame for added accuracy and durability. For leisure players with an aggressive game plan.



302009

**FZ FORZA
POWER 588 M**

Holes	88
Weight	86g
Balance	290 mm (M)
Flexibility	Medium (3)
Shaft	30T CNT U-HM
Frame	30T CNT U-HM w. 4pcs Ti.
Power	6
Player	Offensive

If you want power but feel more comfortable with a evenly balanced racket, this should be your new preferred racket of choiche. Kevlar ® reinforced shaft for added power and a titanium frame for added accuracy and durability. For leisure players with an aggressive game plan.



302132

**FZ FORZA
POWER 388 M**

Holes	88
Weight	85g
Balance	293 mm (M)
Flexibility	Medium (3)
Shaft	30T CNT U-HM
Frame	30T CNT U-HM w. 2pcs Ti.
Power	7
Player	Offensive

For the players that wants more power, but needs some help in generating it. The Kevlar® reinforced shaft will help generate a lot of extra power and will absorb shock and relieving your wrist and elbow. With our innovative Air Flow Frame, the joint will make sure there's no torsion in the frame when hitting, granting you extreme accuracy. Power, precision and price - Power 388! We recommend this racket to leisure players as well as elite players.



302133

**FZ FORZA
POWER 388 F**

Holes	88
Weight	85g
Balance	293 mm (M)
Flexibility	Flexible (2)
Shaft	30T CNT U-HM
Frame	30T CNT U-HM w. 2pcs Ti.
Power	7
Player	Offensive

For the players that wants more power, but needs some help in generating it. The Kevlar® reinforced shaft will help generate a lot of extra power and will absorb shock and relieving your wrist and elbow. With our innovative Air Flow Frame, the joint will make sure there's no torsion in the frame when hitting, granting you extreme accuracy. Power, precision and price - Power 388! The softer shaft will help recreational, leisure, female and junior players create more power.



302134

FZ FORZA POWER 288

Holes	88
Weight	85g
Balance	293 mm (HH)
Flexibility	Medium (3)
Shaft	30T CNT U-HM
Frame	30T CNT U-HM w. 2pcs Ti.
Power	7
Player	Offensive

This head heavy and Kevlar® reinforced racket will help players create a lot of power. The racket is head heavy to create power, while Kevlar® helps absorb some of the stress instead of leading it to your joints. A good starting point for attacking players that wants power at a very affordable price.



302135

FZ FORZA POWER 176

Holes	76
Weight	86g
Balance	290 mm (M)
Flexibility	Flexible (2)
Shaft	24T CNT U-HM
Frame	30T CNT U-HM w. 2pcs Ti.
Power	5
Player	Offensive

The starting point for attacking players. Head heavy for generating powerful offense. Titanium reinforced frame for increased accuracy. A flexible shaft to help players create power. The choice for attacking players looking for some help to create power and accuracy. Recommended for leisure players.



LIGHT

FOR SPEED AND EASIER PLAY

If you are looking for speed and easier play, this is where you should look.

Introducing a range of rackets, that are light, thin, fast and furious.

For defensive players, fast paced doubles and up and coming players.



302139

FZ LIGHT 9,9

Holes	88
Weight	82g
Balance	300mm (HH)
Flexibility	Stiff (4)
Shaft	40T CNT U-HM
Frame	40T CNT U-HM
Power	10
Player	Fast

Lethal, light, luxurious design. Lift your game with our top model in our innovative light series. With our innovative Air Flow Frame, the joint will make sure there's no torsion in the frame when hitting, granting you legendary accuracy. The "snake skin" reinforced frame builds on the accuracy and the exclusivity of this racket. Head heavy to help generate power. Stiff for accuracy. Light for speed and manoeuvrability. A top of the line racket, crafted for tournament and elite players, but will help elevate anyone's game!



302140

FZ LIGHT 9

Holes	88
Weight	82g
Balance	300mm (M)
Flexibility	Very Stiff (5)
Shaft	40T CNT U-HM
Frame	40T CNT U-HM
Power	10
Player	Fast

For the player that is looking for extreme speed and manoeuvrability combined with high accuracy and control this is the racket! With a thin frame, a thin shaft combined with the weight this racket offers unparalleled speed. The very stiff staff makes sure that the shuttle goes where you want, while the 88 holes string system offers superior control and feel.



301918

FZ LIGHT 8

Holes	88
Weight	78g
Balance	297mm (HH)
Flexibility	Stiff (4)
Shaft	40T CNT U-HM
Frame	40T CNT U-HM
Power	9
Player	Fast - Double Players

Thin aerodynamic frame, light and heady heavy. You demanded and of course FZ FORZA rises up to the challenge. This racket is especially designed for the fast pace in doubles. Excellent playing capabilities and almost no torsion for accuracy. Slim frame and light for faster strokes and head heavy to help create a threat from the back court and once you turned your defense into offence. This is an excellent racket recommended for everyone who wants the fastest action on court.



302141

FZ LIGHT 7

Holes	88
Weight	82g
Balance	295mm (HH)
Flexibility	Medium (3)
Shaft	40T CNT U-HM
Frame	40T CNT U-HM
Power	8
Player	Fast

Speed and power combined are the key words for this racket. This head heavy racket offers power, while the weight makes it easier to manoeuvre the player that doesn't have a rocket for an arm. A good choice for leisure and competitive players looking for a lighter racket.

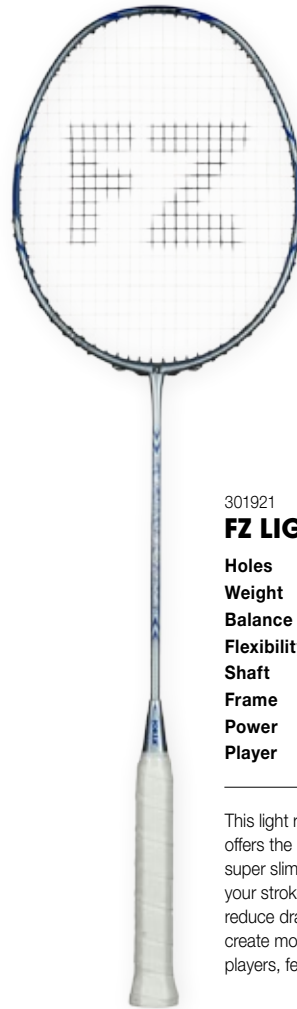


301920

FZ LIGHT 6

Holes	88
Weight	80g
Balance	290mm (M)
Flexibility	Medium (3)
Shaft	30T CNT U-HM
Frame	30T CNT U-HM
Power	7
Player	Fast

If you want speed and feel comfortable with a evenly balanced racket, this should be your new preferred racket. The frame is titanium reinforced for added accuracy and durability. For leisure players who like the fast game.

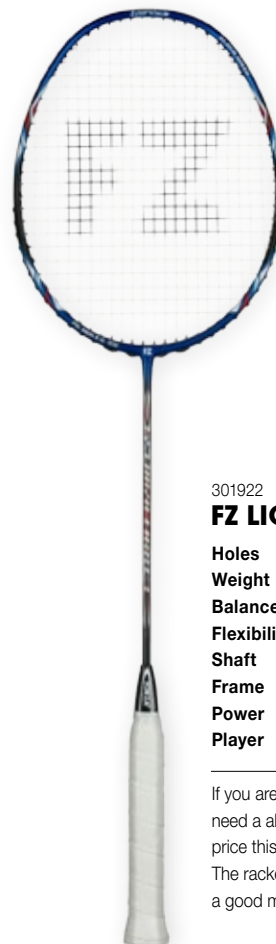


301921

FZ LIGHT 3

Holes	76
Weight	80g
Balance	285mm (HL)
Flexibility	Flexible (2)
Shaft	24T CNT U-HM
Frame	24T CNT U-HM
Power	5
Player	Fast

This light racket lies very well in your hand and offers the player a very good light racket. The super slim shaft further increases the speed and your strokes, while the aerodynamic frame helps reduce drag. The shaft is flexible to help players create more power. We recommend it for leisure players, females and junior players.



301922

FZ LIGHT 1

Holes	76
Weight	80g
Balance	290mm (M)
Flexibility	Medium (3)
Shaft	24T CNT U-HM
Frame	24T CNT U-HM
Power	6
Player	All round

If you are found of light weight rackets and need a all-round good racket at a competitive price this will leave the competition behind. The racket is lighter than normal but still offers a good mix of playability, accuracy and power.



GRAPHITE

It does not become any lighter than this! This small line of rackets offer fantastic fast and easy to play rackets.



04151 FIERY CORAL

0099 WHITE

68g

302425

GRAPHITE LIGHT 8U

Holes	76
Weight	68g
Balance	290mm (HH)
Flexibility	Medium (3)
Shaft	40 T - CNT U-HM Graphite
Frame	40 T - CNT U-HM Graphite
Power	5
Player	Defensive/All round

It does not come any lighter - 68 gram. A fantastic fast and easy to play racket. A racket that gives you the swing speed you have always been dreaming about.



74g

302370

GRAPHITE LIGHT 6U V2

Holes	76
Weight	74g
Balance	290mm (HH)
Flexibility	Medium (3)
Shaft	40 T - CNT U-HM Graphite
Frame	40 T - CNT U-HM Graphite
Power	5
Player	Defensive/All round

An update to our popular Light 6U. Super flexible and good for leisure players and players who want super fast style of play.

CLASSIC

The Classic series is the perfect choice for beginners and leisure players. Featuring Endure-frames for perfect durability and 100% graphite frame secures the benefits of light-weight, easy handling and superior feel.



302197, JR: 302198

FZ CLASSIC 5

Holes	76
Weight	94 90g
Balance	290 (M)
Flexibility	Medium (3)
Shaft	24T Full graphite- Jointless
Frame	Slim aluminium
Power	2
Player	Beginner/School

Featuring our Endure-frame this graphite shaft racket is a very durable choice for beginners and leisure players. This racket will stay with you for years.



302195, JR: 302196

FZ CLASSIC 3

Holes	76
Weight	100 95g
Balance	290 (M)
Flexibility	Very stiff (5)
Shaft	Steel Shaft - Jointless
Frame	Slim aluminium
Power	1
Player	Beginner/School

Featuring our Endure-frame this graphite shaft racket is a very durable choice. This racket will stay with you for years and is a good choice for beginners or leisure players.



302193, JR: 302194, MINITON: 302199

FZ CLASSIC 1

Holes	76
Weight	105 100g
Balance	290 (M)
Flexibility	Very stiff (5)
Shaft	Steel Shaft - T-joint
Frame	Slim aluminium
Power	1
Player	Beginner/School

A racket with aluminium frame and steel shaft with T-joint. A strong and durable beginner racket.

FZ POWER TRAINER

DEVELOPING YOUR GAME

In close cooperation with top players FZ FORZA has developed the Power Trainer racket as replacement for the squash racket in the daily training. It is currently used by many top players. The Power Trainer is designed as an ordinary racket in 100 percent graphite and its weight of 115 , 130 or 150 grams making it the perfect racket for developing your game.

Clara Nistad

Emma Wengberg





9914

FZ POWER TRAINER 115

Weight 115g

Player Power trainer for training purpose

115 g. racket. Used to train tournament players.



300218

FZ POWER TRAINER 130

Weight 130g

Player Power trainer for training purpose

130 g. racket. Used to train top-level players.



301306

FZ POWER TRAINER 150

Weight 150g

Player Power trainer for training purpose

150 g. racket. Used to train professional players.



FZFORZA

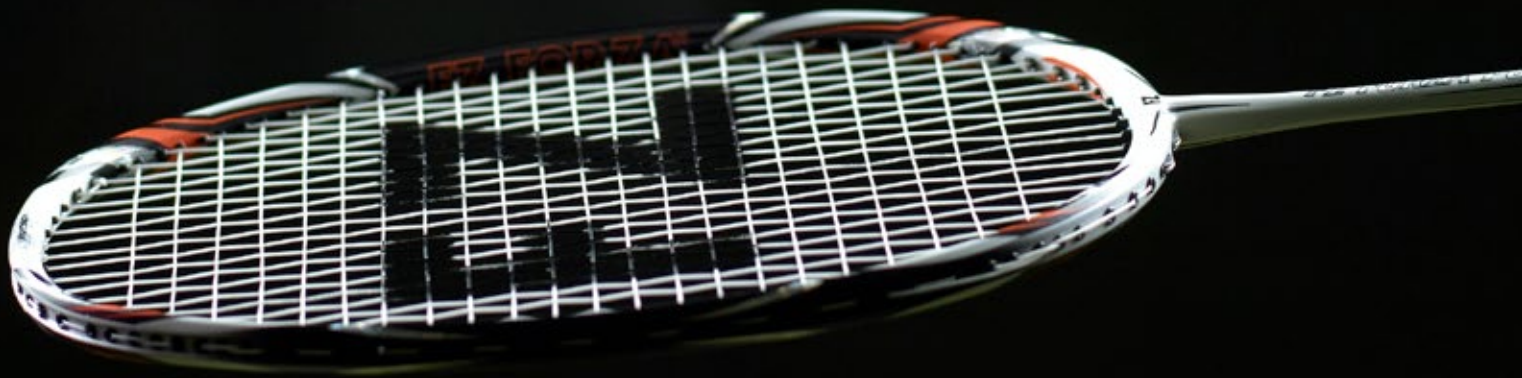
SHUTTLES

A shuttlecock is a finely balanced product. The quality depends on what the geese deliver.

The rotation is regularly measured by an infrared beam to achieve an optimum flight.

Every single FZ FORZA shuttlecock is extensively controlled by machinery and by inspectors.

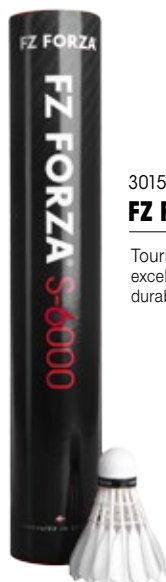
The shuttlecocks are sorted out for flight, speed and durability.





301554
FZ FORZA VIP

First-class tournament shuttle, with unsurpassed durability and flight. Double tested for speed and stability in flight.



301555
FZ FORZA S-6000

Tournament shuttle offering excellent flight and excellent durability.



301556
FZ FORZA S-5000

Especially suitable for players who play frequently, as part of their exercise regime, and require an extra durable practice shuttle offering good flight.



301557
FZ FORZA S-3000

Suitable for players who play frequently, as part of their exercise regime, and require a durable practice shuttle offering good flight.



301559
FZ FORZA S-2000

A practice shuttle of satisfactory quality for players who play as a part of their exercise regime. Good durability and flight.



301809
FZ FORZA NS-9

The NS-9 has a unique vane pattern in the skirt which imitates the natural pattern from the best feathers used in natural tournament shuttles. This gives this shuttle a superb flight performance and a long durability. Our girdle design has double stitching for increased durability. The Natural cork head means that you will have superior feel from this nylon shuttle. Suitable for ultimate training and tournament for club players.



301810
FZ FORZA NS-7

The NS-7 has a unique vane pattern in the skirt which imitates the natural pattern from the best feathers used in natural tournament shuttles. This gives this shuttle a superb flight performance and a long durability. Our girdle design has double stitching for increased durability. With the synthetic cork you get an extremely durable shuttle. Suitable for training for club players.



301560
FZ FORZA S-1000

Especially suitable for beginners and players who play as part of their exercise regime.

CHOICE OF STRINGS

Thin gauges (0,62 – 0.70 mm):

Recommended: Tournament players and players who want to have more fun and win more games. Listen to the strings and hear the music.

Advantages: Less air resistance, faster reactions, greater power, less string tension = longer racket life.

Disadvantages: Less durability and more expensive maintenance.

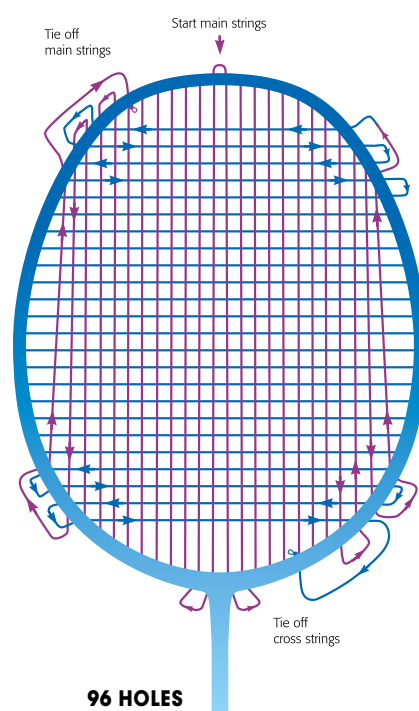
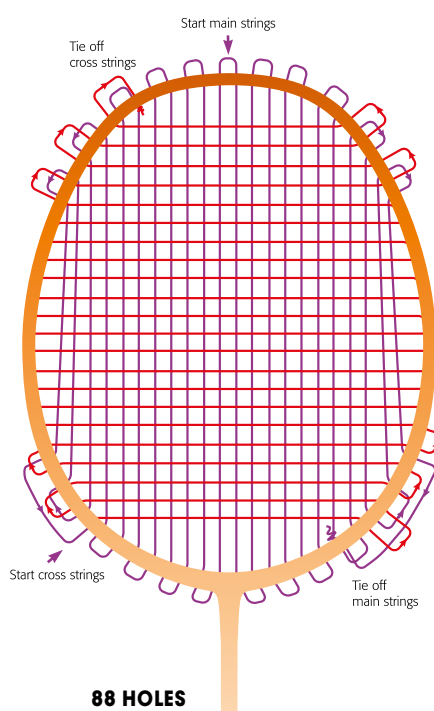
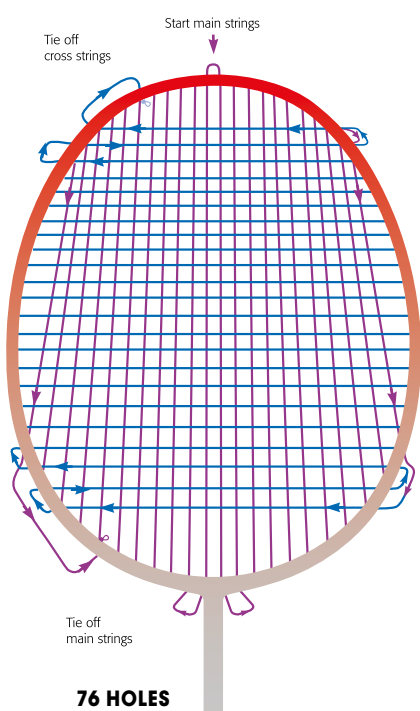
Thick gauges:

Recommended: amateur players, beginners, and players who often hit the shuttlecock outside the impact surface.

Advantages: Longer life and thereby less expense.

Disadvantages: More air resistance, slower strokes and a little less power.

HOW TO STRING A RACKET



301896

FZ 68 POWER PLUS

Power	6
Playability	6
Durability	5
Lenght	10 m (1 set)
Gauge	0,68 mm

The FZ 68 Power plus string is great for holding string tension and offers superior repulsion with a high clear sound. FZ 68 Power plus is the perfect choice for the advanced player who is looking for power and the ultimate sound.



301895

FZ 68 POWER PLUS

Power	6
Playability	6
Durability	5
Lenght	200 m
Gauge	0,68 mm

The FZ 68 Power plus string is great for holding string tension and offers superior repulsion with a high clear sound. FZ 68 Power plus is the perfect choice for the advanced player who is looking for power and the ultimate sound.



301214

FZ 71 DURABLE

Power	3
Playability	5
Durability	5
Lenght	200 m
Gauge	0,71 mm

A first-rate string for those who want good durability and a string which maintains its tension for a long time. Recommended for all players.



5692

FZ 70 WHITE

Power	5
Playability	5
Durability	5
Lenght	200 m
Gauge	0,70 mm

Used in all FZ FORZA full graphite rackets. A top quality multifilament string, which offers superior playability. A thin string which gives low air resistance but still with a good durability and superior tension holding. A tournament string offering extremely good playability and power. Recommended for all players.



3089

FZ 70 YELLOW

Power	5
Playability	5
Durability	5
Lenght	200 m
Gauge	0,70 mm

Used in all FZ FORZA full graphite rackets. A top quality multifilament string, which offers superior playability. A thin string which gives low air resistance but still with a good durability and superior tension holding. A tournament string offering extremely good playability and power. Recommended for all players.



GRIP





4877

TOWEL GRIP REEL

Towel Grip. Black, blue, yellow or white.
12 M/reel



302407

PRO SUPER GRIP REEL

Overgrip. White.



302398

PRO SUPER GRIP BOX

Overgrip. White.



301901

SUPER GRIP LIGHT REEL

Overgrip. White.
10 Pcs/roll



300166

SUPER GRIP

Overgrip. Classic or neon color.
3pcs/card



300167

SOFT GRIP

Replacement grip. Classic or neon color.
2pcs/card



300501

TOWEL GRIP

Overgrip. Classic color.
2pcs/card



3834

XTREME GRIP


Replacement Grip. Classic color.
1pcs/card



301597

A GRIP

Overgrip. White, blue, green or pink.
100 Pcs/bag



Clara Nistad

FZ FORZA BAGS

Carry your gear with pride. This year we introduce bags with a new exclusive print - Carton. FZ FORZA introduces a comprehensive range of badminton bags in different styles and colors. Enjoy the benefits of the large Carton racket bag suited for 15 rackets or the Lennon backpack if you just feel like packing light and easy.

The collection offers a bag perfect for every kind of match day or training event.



302384

CARTON RACKET BAG

15 rackets

- (WxHxL) 42x30x75 cm



0099 WHITE

302174

TYRUS RACKET BAG

- (WxHxL) 19x32x74 cm



Anders Antonsen



96 BLACK

302173

TAHSIN RACKET BAG

6 rackets
- (WxHxL) 25x30x73 cm



0455 CHINESE RED

302383

CARLON RACKET BAG

6 rackets
- (WxHxL) 22x30x74 cm



01103 MALIBU BLUE

302385

CAPITAL RACKET BAG

6 rackets
- (WxHxL) 24x30x75 cm



01103 MALIBU BLUE

302453

CORONA RACKET BAG

9 rackets
- (WxHxL) 30x30x73 cm



0357 CHERRY TOMATO

302381

CALEDON RACKET BAG

9 rackets
- (WxHxL) 30x30x73 cm



02131 TOUCAN GREEN

302212
BOA VERDE RACKET BAG
15 rackets
- (WxHxL) 40x30x77 cm



02131 TOUCAN GREEN

302211
BOA VISTA RACKET BAG
6 rackets
- (WxHxL) 25x30x73 cm



01115 SURF THE WEB

302345
LARSON BACKPACK
- (WxHxL) 16x43x29 cm



0455 CHINESE RED



0297 JASMINE GREEN

301648
LENNON BACKPACK
- (WxHxL) 23x50x35 cm



01142 ELECTRIC BLUE



0008 BLACK

301649

LAMBERT TRAVEL BAG

- (WxHxL) 36x38x72 cm



0008 BLACK

301884

MONT SPORTS BAG

- (WxHxL) 31x30x53 cm



01103 MALIBU BLUE

0385 SAFETY YELLOW

301889

MINE TOILET BAG

- (WxHxL) 10x11x25 cm



01103 MALIBU BLUE

301890

MINE PENCIL CASE

- (WxHxL) 5x11x25 cm

Emma Wengberg

FZ FORZA ACCESSORIES



301460

LAPTOP SLEEVE

Size: 38 x 30 cm



3135

FZ LOGO STENCIL

1pc



2873

FZ STRING PAINT

Red, Black

1pc



301877
MICK TOWEL
100% Cotton
140 X 70cm, Size L

301878
MICK TOWEL
100% Cotton
100 X 50cm, Size S



301546
FZ BOTTLE
One Size
0,75L



6964 w. logo, 2287 without logo
FORZA WRISTBAND
With or without FZ logo
36 psc. box
One size



301187
SWEATLET XXL
With FZ logo
36 Pcs. box
One size



300362
FZ BUCKET
One size
Hight 1 m



301583 w. strap 301584 wo. strap
NET W/O LOGO
One Size
Choose with or without logo

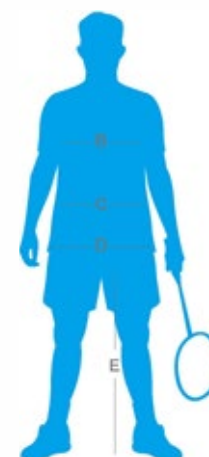
FZ FORZA SIZE GUIDE

Find the correct size with our size guide.

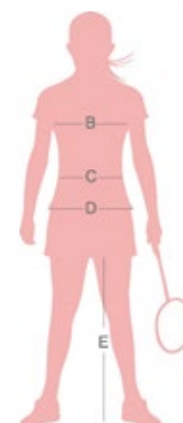
The measurements are body measurements and not of the garments.



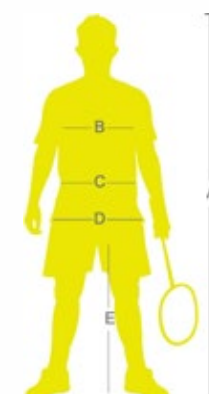
FZFORZAMEN							
Size	XS	S	M	L	XL	2XL	3XL
B. Chest	92	96	100	104	110	116	122
C. Waist	78	83	88	93	98	103	108
D. Hip	93	97	101	105	111	117	123
E. Inside leg length	80	81	82	83	84	85	86



FZFORZA WOMEN							
Size	2XS	XS	S	M	L	XL	2XL
B. Chest	78	82	86	90	94	100	106
C. Waist	62	66	70	74	77	80	83
D. Hip	87	91	95	99	103	109	115
E. Inside leg length	77	78	79	80	81	82	83



FZFORZA JUNIOR					
Size	6	8	10	12	14
A. Centolong	116	128	140	152	164
B. Chest	64	68	72	76	80
C. Waist	54	58	62	66	70
D. Hip	66	70	74	78	82
E. Inside leg length	55	60	65	71	77



FZ FORZA®

INNOVATED IN DENMARK



BULGARIA

Jetan 2012 Ltd
Tel.: +359 38 626262
Mobile: +359 888 638360
fzforza.bulgaria@gmail.com

CZECH REPUBLIC/SLOVAK REPUBLIC

Mira Business Group s.r.o.
Tel: +420 251 512 890
Mobile: +420 603 252 989
Mail: info@badmintonforza.cz
www.badmintonforza.cz

CYRUS

YDK SPORTS ACT LTD
Tel.: +357 99415175
Mail: y-kneknas@regis.com.cy

ESTONIA

FORZA EESTI OÜ
Tel.: +372 56 463 609
Mail: info@forza-eesti.ee
Website: www.forza-eesti.ee

ESTONIA

Fortis miles oü
Mobile: +37256691699
Mail: info@forza.ee
www.forza.ee

FINLAND

CEEGOL OY
Mobile: +358452697602
Mail: MYynti@CEEGOL.COM
Website: WWW.CEEGOL.COM

FRANCE

FZ FORZA
Tel.: +33 981 17 65 34
Mail: contact@fzforza.fr
Web: www.fzforza.fr

GERMANY

X-B-BORN, Burkhard Born Vertr. GmbH
Tel.: +49 4121 740012
Mail: xbborn@t-online.de
GREECE

Overland Enterprises Ltd

Tel.: +30 2321035375
Mobile: +30 6974700134
Mail: fzforzahellas@yahoo.gr

HOLLAND/BELGIUM

SPORTAK Racketsports
Tel.: +31 6 50668319
Mail: info@sportak.nl
Website: www.sportak.nl

HUNGARY

Pesti Sport International Kft.
Tel.: +36 20 617 2434
Mail: info@pestisport.hu
www.pestisport.hu

LITHUANIA

UAB EETC
Tel.: +370 61111033
Mail: forza@eetc.lt

IRELAND

FORZA Sports (IRL) Ltd
Tel.: +353 87 7781635
Mail: markphelan.gpm@gmail.com
www.forzasports.ie

NORWAY

Sport Modern A/S
Tel.: +47 90556452
Mobile: +47 90785780
Mail: kontakt@sportmodern.no

POLAND

Arton
Tel.: +48 33 8293298
Mobile: +48 513193121
Mail: fzforza@fzforza.pl
Website: www.twojbadminton.pl

PORTUGAL

FZ Forza Iberia SL
Tel: +351 918254092
mail: fzforzaportugal@gmail.com

ROMANIA

TSCA SPORT & BUSINESS
Tel.: 0040744423454
Mail: badminton@fz-forza.ro
Website: www.fz-forza.ro

SLOVENIA/CROATIA

HL TRGOVINA d.o.o.
Tel.: +386 41 742 234
Mail: info@hl-trgovina.si

SPAIN

FZ FORZA Iberia SL
Tel.: +34 622 619 967
Mail: info@fzforza.es

SWEDEN

Active Sportswear
Mobile: +46(0)070-9655255
Mail: fzforza1@gmail.com

SWITZERLAND

FZ FORZA
Tel.: +41 78 648 56 73
Mail: contact@fzforza.ch
Web: www.fzforza.ch

UKRAINE

FZ FORZA Ukraine
Tel.: +380 50 750 36 39
Mail: info@forza.com.ua
www.forza.com.ua

UNITED KINGDOM

FZ FORZA UK
Tel.: +44 (0)2476 692397
Mobile: +44 (0)7930539558
Mail: r.j.parsons@hotmail.co.uk
Website: www.forzabadminton.co.uk



At Active Sportswear Int., including FZ FORZA, we work strategically with corporate social responsibility (CSR), and as a part of this work we are now a member of the European Organization Business Social Compliance Initiative (BSCI). BSCI is an organization, helping members securing that human rights are respected, and that there are decent working conditions in the supply chain. BSCI has an international Code of Conduct and carry out the third party audit of international, independent auditors, authorized to make these audits. With our membership of BSCI we have taken a quantum leap in our commitment to strategic supply management.

FZ FORZA

Maltvej 20 · DK-9700 Brønderslev · Denmark · Tel.: +45 9882 5533 · Fax +45 9880 0004

· www.fz-forza.com · www.facebook.com/FZFORZA.International

Download center: www.activesportswear.eu